



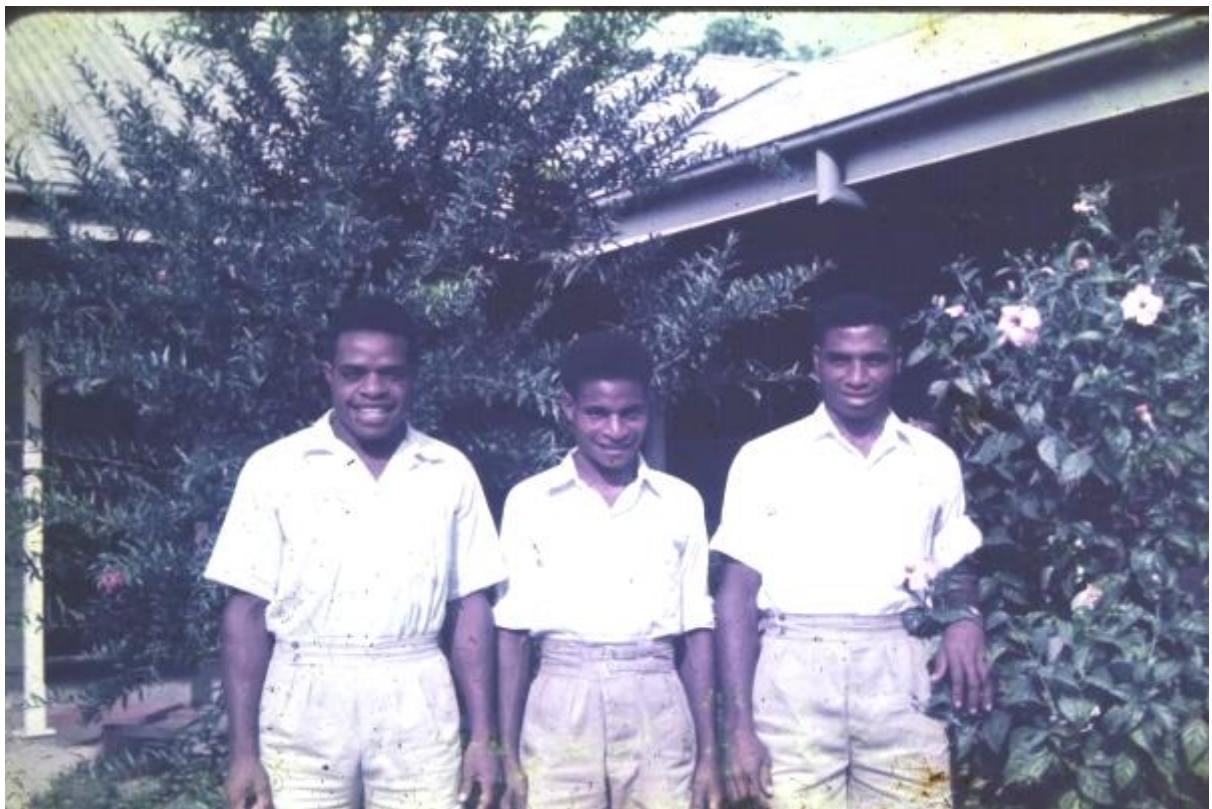
Dorothy Shaw 1998



Dr Dorothy E Shaw (1920-2007), government plant pathologist in Papua New Guinea (1953-1976) attended the first International Congress of Plant Pathology held in London in 1968. In this picture with another colleague, she is examining tobacco probably affected by frog eye leaf spot caused by *Cercospora nicotianae*.



First Plant Pathology – Entomology Expedition, PNG 1956



Plant Pathology Assistants, Reg Manudaba, Petersen and Edmond James, PNG 1956.



Plant Pathology - Entomology Expedition PNG 1957



Sweet potato disease 1957



Dorothy Shaw and the first plant pathology car PNG 1960



Field nursery PNG 1956



Sisal Plantation PNG 1956



Coffee plantation PNG 1956



Coffee disease PNG 1956